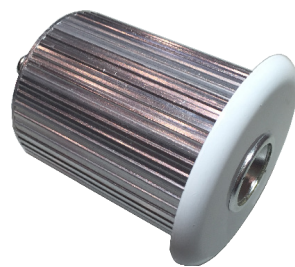


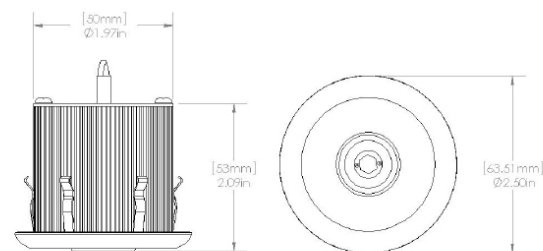


SUNSTAR50 (SR50) CEILING LUMINAIRE

0-10V DIMMING | SMART LIGHTING COMPATIBLE | EXTERNAL DRIVER



Patented Fixture
For Insulated and Fire-Rated Ceiling
Upgradable Down Light LED + Can Housing
Do Not Require Additional Can or Rough in Kits to Install

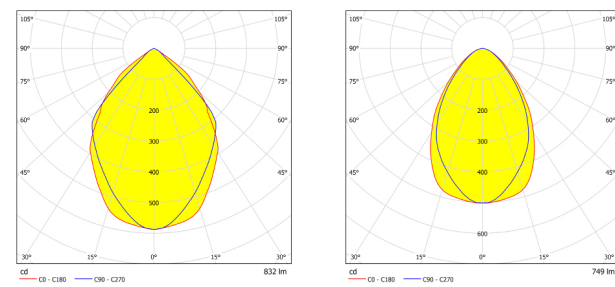


PRODUCT NAME	SUNSTAR50
INPUT	700mA / ~10VDC
POWER FACTOR	>0.9
POWER CONSUMPTION	6.5W
DIMMING	0-10V dimming
MATERIAL	Anodized extruded aluminum, glass lens
WEIGHT	0.2 lb (0.09 kg)
SIZE	2" in diameter, 2" in length
MOUNTING	Recessed Mount into ceiling, Surface Mounted Mounted to Standard Conduit
LIFETIME	> 60,000 hrs
WARRANTY	Ten year limited warranty
OPTICS	Milled aluminum primary optic, clear glass lens aluminum reflector, optional translucent diffuse
OPERATING RANGE	-30°C to 40°C
BEAM ANGLE	Standard 90°, Diffused 110°
EQUIVALENCE	Traditional 50-60W halogen, Recessed in any Building Material without a Can or Rough In Kit

  DAMP OR WET LOCATIONS
TYPE IC, FIRE-RATED CEILING

Higher CRI (85, 90, or 95) are available upon request.

Also Available in Tunable White
Also Suitable for Soffit and Canopy



SR50M1X6-35

SR50M1X6-35-D

PRODUCT & LED MODULE SIZE	INPUT CURRENT	POWER CONSUMED	LUMEN OUTPUT	FIXTURE EFFICACY
SR50 M1X3	700 mA	6.5 W	693 LM	107 LM/W
SR50 M1X6	700 mA	6.5 W	832 LM	128 LM/W
Specialty designs with different chips per module available upon request				
CCT	2,700K	3,500K	4,100K	5,500K
LIGHT OUTPUT CONVERSION	.95	1.0	1.05	1.16
CRI	80	80	80	75

PRODUCT	LED MODULE SIZE	CURRENT	HOUSING COLOR	COLOR TEMPERATURE	TRIM	
SR50		-0700	-SV	-	-	
SR50	M1X3	1 MODULE 3 CHIP	SV SILVER	55	25V	
	M1X6	1 MODULE 6 CHIPS		5500K	2.5" Ø SILVER	
				41	2WT	2.5" Ø WHITE
				35	3SV	3.5" Ø SILVER
				27	3SV	3.5" Ø SILVER
				27/55	CCT TUNING	
RGB	RGB					

