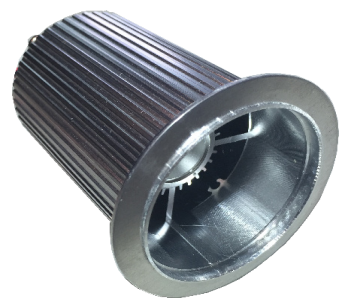


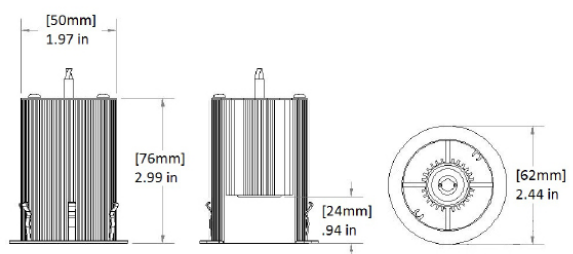


# SUNSTAR50-RECESSED (SR50-RC) CEILING LUMINAIRE

0-10V DIMMING | SMART LIGHTING COMPATIBLE | EXTERNAL DRIVER



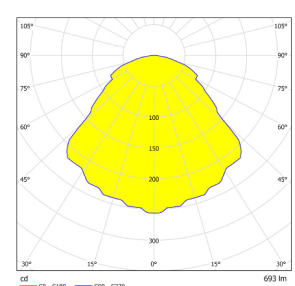
Patented Fixture  
For insulated and fire-rated ceiling  
Upgradable Down Light LED + Can Housing  
Do Not Require Additional Can or Rough in Kits to Install



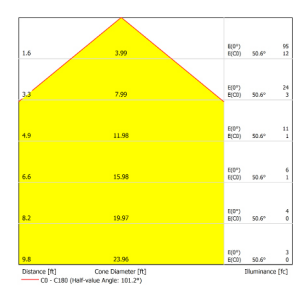
PRODUCT NAME	SUNSTAR50-RC
INPUT	700mA / ~10VDC
POWER FACTOR	>0.9
POWER CONSUMPTION	6.5W
DIMMING	0-10V dimming
MATERIAL	Anodized extruded aluminum, glass lens
WEIGHT	0.2 lb (0.08 kg)
SIZE	2" in Diameter, 3" in Length
MOUNTING	Recessed Mount into ceiling, Surface Mount, Mounted to Conduit
LIFETIME	> 60,000 hrs
WARRANTY	Ten year limited warranty
OPTICS	Milled aluminum primary optic, clear glass lens Aluminum reflector, optional translucent diffuse
OPERATING RANGE	-30°C to 40°C
BEAM ANGLE	130°
EQUIVALENCE	Traditional 50-60W halogen, Recessed in any Building Material without a Can or Rough In Kit

DAMP OR WET LOCATIONS  
TYPE IC, FIRE-RATED CEILING

Higher CRI (85, 90, or 95) are available upon request.  
Also Available in Tunable White  
Also Suitable for Soffit and Canopy



SR50M1X6-RC-35



SR50M1X6-RC-35

PRODUCT & LED MODULE SIZE	INPUT CURRENT	POWER CONSUMED	LUMEN OUTPUT	FIXTURE EFFICACY
SR50 M1X3	700 mA	6.5 W	578 LM	89 LM/W
SR50 M1X6	700 mA	6.5 W	693 LM	107 LM/W

Specialty designs with different chips per module available upon request

CCT	2,700K	3,500K	4,100K	5,500K
LIGHT OUTPUT CONVERSION	.95	1.0	1.05	1.16
CRI	80	80	80	75

PRODUCT	LED MODULE SIZE	HOUSING	CURRENT	HOUSING COLOR	BEAM ANGLE	COLOR TEMPERATURE	DIFFUSER
SR50		-RC	-0700	-	-	-	-
SR50	M1X3 1 MODULE 3 CHIPS	RC RECESSED	0700 mA	SV SILVER	50 50°	55 5500K	D DIFFUSED
	M1X6 1 MODULE 6 CHIPS			BK BLACK	90 90°	41 4100K	
					140 140°	35 3500K	
						27 2700K	
						27/55 CCT TUNING	
						RGB RGB	



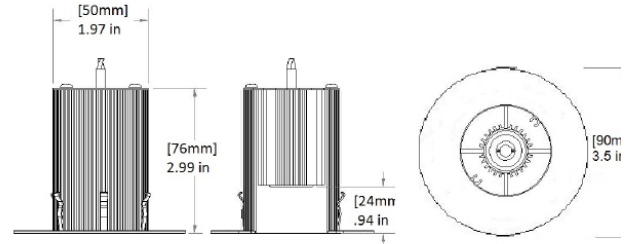


# SR50-RC-3SV CEILING LUMINAIRE



0-10V DIMMING | SMART LIGHTING COMPATIBLE | EXTERNAL DRIVER



Patented Fixture  
For insulated and fire-rated ceiling  
Upgradable Down Light LED + Can Housing  
Do Not Require Additional Can or Rough in Kits to Install

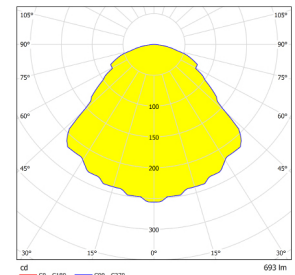


PRODUCT NAME	SUNSTAR50-RC-3SV
INPUT	700mA / ~10VDC
POWER FACTOR	>0.9
POWER CONSUMPTION	6.5W
DIMMING	0-10V dimming
MATERIAL	Anodized extruded aluminum, glass lens
WEIGHT	0.2 lb (0.08 kg)
SIZE	2" in Diameter, 3" in Length
MOUNTING	Recessed Mount into ceiling, Surface Mount, Mounted to Conduit
LIFETIME	> 60,000 hrs
WARRANTY	Ten year limited warranty
OPTICS	Milled aluminum primary optic, clear glass lens Aluminum reflector, optional translucent diffuse
OPERATING RANGE	-30°C to 40°C
BEAM ANGLE	130°
EQUIVALENCE	Traditional 50-60W halogen, Recessed in any Building Material without a Can or Rough In Kit

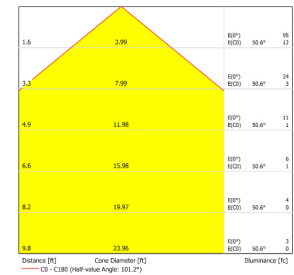
  DAMP OR WET LOCATIONS  
TYPE IC, FIRE-RATED CEILING

Higher CRI (85, 90, or 95) are available upon request.

Also Available in Tunable White  
Also Suitable for Soffit and Canopy



SR50M1X6-RC-35



SR50M1X6-RC-35

PRODUCT & LED MODULE SIZE	INPUT CURRENT	POWER CONSUMED	LUMEN OUTPUT	FIXTURE EFFICACY
SR50 M1X3	700 mA	6.5 W	578 LM	89 LM/W
SR50 M1X6	700 mA	6.5 W	693 LM	107 LM/W

Specialty designs with different chips per module available upon request

CCT	2,700K	3,500K	4,100K	5,500K
LIGHT OUTPUT CONVERSION	.95	1.0	1.05	1.16
CRI	80	80	80	75

PRODUCT	LED MODULE SIZE	HOUSING	CURRENT	HOUSING COLOR	BEAM ANGLE	COLOR TEMPERATURE	TRIM
SR50		-RC	-0700	-	-	-	-
SR50	M1X3 1 MODULE 3 CHIPS	RC RECESSED	0700 mA	SV SILVER	50 50°	55 5500K	3SV 3.5 IN SILVER
	M1X6 1 MODULE 6 CHIPS			BK BLACK	90 90°	41 4100K	
					140 140°	35 3500K	
						27 2700K	
						27/55 CCT TUNING	
						RGB RGB	

