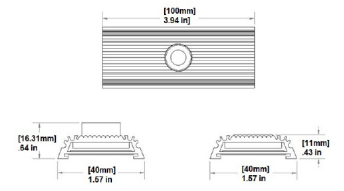
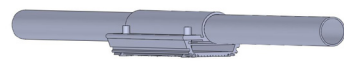




# SUNSTRIP40 (ST40) SOFFIT LUMINAIRE

0-10V DIMMING | SMART LIGHTING COMPATIBLE | EXTERNAL DRIVER



ST40 Dimensions

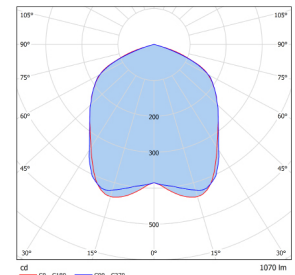
PRODUCT NAME	SUNSTRIP40 (ST40)
INPUT	700mA
POWER FACTOR	>0.9
POWER CONSUMPTION	6.5W or 2.2W
DIMMING	0-10V dimming
MATERIAL	Anodized extruded aluminum, glass lens (ST40)
WEIGHT	0.2 lb (ST40),
LENGTH	4"
MOUNTING	Magnet Mount, Conduit Mount,
LIFETIME	> 60,000 hrs
WARRANTY	Five year limited warranty
OPTICS	Milled aluminum primary optic, clear glass lens aluminum reflector (ST40)
OPERATING RANGE	-30°C to 40°C
BEAM ANGLE	Recessed 90°, Standard 120° (ST40),



DAMP/WET LOCATION [IP64/IP66]

Higher CRI (85, 90, or 95) are available upon request.

Also Available in Tunable White



ST40Y04M1X6-41

PRODUCT & LED MODULE SIZE	INPUT CURRENT	POWER CONSUMED	LUMEN OUTPUT	FIXTURE EFFICACY
ST40 M1X6	700 mA	6.5 W	1070 LM	164 LM/W

Specialty designs with different chips per module available upon request

CCT	2,700K	3,000K	4,100K	5,000K
LIGHT OUTPUT CONVERSION	0.90	0.95	1	1.11
CRI	80	80	80	75

PRODUCT	LENGTH	LED MODULE SIZE	CURRENT	LED MODULE STYLE
ST40			-	-
ST40	Y04 4 INCHES	M1X6 1 MODULES 6 CHIPS EACH	0700 mA	N/A 120°

HOUSING COLOR	COLOR TEMPERATURE	MOUNTING BRACKET STYLE	LOCATIONS
-	-	-	-
SV SILVER	50 5000K	SMB SURFACE MOUNT BLACK	EX EXTERIOR WET
BK BLACK	41 4100K	SWV SWIVEL MOUNT	
	30 3000K	MG MAGNETIC MOUNT	
	27 2700K	CM CONDUIT MOUNT	

H-5

